

# Hy-Lok ZCO O-Ring Face Seal Fittings

Catalog No. H-260CF  
Jan. 2006



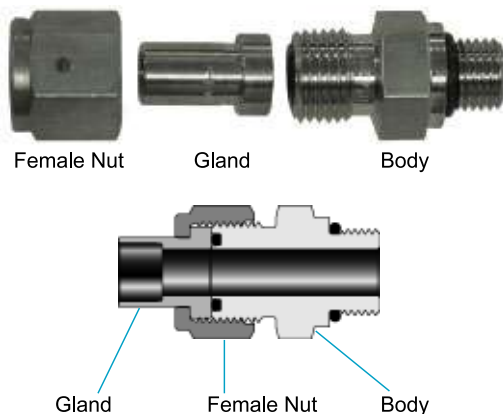
## MATERIAL

**Bodies Glands and Nuts** - 316 stainless steel  
**Automatic Tube Weld Fittings** - 316L stainless steel  
**O-RING** - 70 durometer fluorocarbon (Viton) is standard on ZCO bodies. 90 durometer fluorocarbon is used with SAE/MS threads. Other materials are available upon request with temperature range belows are;

Material	Temperature Rating	Designator
Fluorocarbon	400°F (200°C)	
Buna N	250°F (120°C)	BU
PTFE	450°F (230°C)	PE
Perfluoroelastomer	550°F (280°C)	KA
Ethylene - propylene	300°F (140°C)	EP

## TYPICAL ASSEMBLY

ZCO assemblies are made up of three basic components



## FEATURES

- Zero Clearance
- Vacuum to High Pressure
- Wide Temperature Range Up to 550°F
- Easy Installation and Maintenance
- Safety Leak Test Ports

## TECHNICAL DATA

### Pressure Ratings

Pressure ratings published in this catalog are calculated in accordance with Power Piping Code ANSI B31.1

### Testing

ZCO assemblies have been consistently helium leak tested to a rate of  $4 \times 10^{-9}$  std cm<sup>3</sup> / s, without leakage.

### Dimensions

For reference only, subject to change.

### O-ring Uniform Size Number

Use chart below to find O-ring Uniform size number of components listed in this catalog.

ZCO Component Size	O-ring Uniform Size Number
ZCO - 4	010
ZCO - 8	111
ZCO - 12	116
ZCO - 16	215

## COMPONENTS LOCATION

Nuts	page 2
Glands	page 2,3
Bodies	page 3,4,5,6,7
Swivel Bodies	page 7,8
Installation Instruction	page 8
Ordering Information	page 8



# HY-LOK CORPORATION

©2002, 2006 HY-LOK CORPORATION All rights reserved

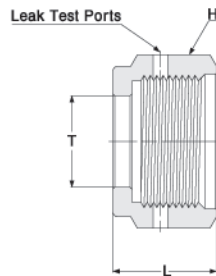


# Hy-Lok ZCO O-Ring Face Seal Fittings

## NUTS

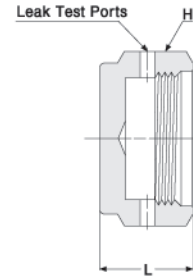
### Female Nut

Connects a ZCO gland and body.



### Blind Nut

Seals a ZCO body.

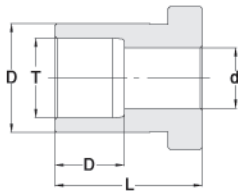


Part Number	ZCO Size in	L	T	H Hex Flat
		in. (mm)		
H-ZCOFN - 4	1/4	0.66 (16.76)	0.40 (10.16)	11/16"
H-ZCOFN - 8	1/2	0.69 (17.53)	0.61 (15.49)	1"
H-ZCOFN - 12	3/4	0.81 (20.57)	0.94 (23.88)	1-1/2"
H-ZCOFN - 16	1	0.81 (20.57)	1.25 (31.75)	1-3/4"

Part Number	ZCO Size in	L	H Hex Flat
		in. (mm)	
H-ZCOBN - 4	1/4	0.44 (11.18)	11/16"
H-ZCOBN - 8	1/2	0.56 (14.22)	1"
H-ZCOBN - 12	3/4	0.75 (19.05)	1-1/2"
H-ZCOBN - 16	1	0.81 (20.57)	1-3/4"

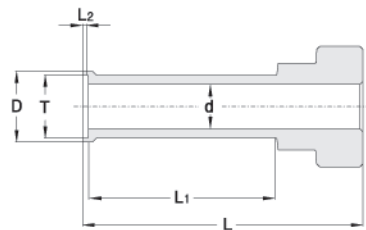
**GLANDS** Adapt tubing to ZCO O-ring face seal.

### Socket Weld Gland



Part Number	ZCO Size in	T Tube O.D.	D	d	L	L <sub>2</sub>	Working Pressure	
			in. (mm)				psig	bar
H-ZCOSWG - 2	1/8	1/8"	0.38 (9.65)	0.09 (2.29)	0.77 (19.56)	0.10 (2.54)	15400	1060
H-ZCOSWG - 4	1/4	1/4"	0.38 (9.65)	0.18 (4.57)	0.77 (19.56)	0.28 (7.11)	6800	460
H-ZCOSWG - 6	1/2	3/8"	0.60 (15.24)	0.28 (7.11)	0.81 (20.57)	0.31 (7.87)	8100	560
H-ZCOSWG - 8	1/2	1/2"	0.60 (15.24)	0.40 (10.16)	0.81 (20.57)	0.38 (9.65)	3000	200
H-ZCOSWG - 12	3/4	3/4"	0.92 (23.37)	0.62 (15.75)	0.94 (23.88)	0.44 (11.17)	3700	250
H-ZCOSWG - 16	1	1"	1.19 (30.23)	0.87 (22.10)	0.98 (24.90)	0.62 (15.75)	3000	200

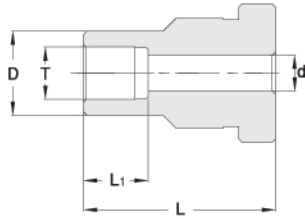
### Automatic Tube Weld Gland



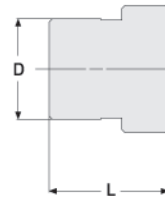
Part Number	ZCO Size in	T Tube O.D.	D	d	L	L <sub>1</sub>	L <sub>2</sub>	Nominal Wall Thickness	Working Pressure	
			in. (mm)						psig	bar
H-ZCOTWG- 4A	1/4	1/4"	0.29 ( 7.37)	0.18 ( 4.57)	1.12 (28.45)	0.75 (19.05)	0.02 (0.51)	0.035"	5100	350
H-ZCOTWG- 6A	1/2	3/8"	0.41 (10.41)	0.31 ( 7.87)	1.13 (28.70)	0.75 (19.05)	0.03 (0.76)	0.035"	3300	220
H-ZCOTWG- 8A	1/2	1/2"	0.55 (13.97)	0.40 (10.16)	1.14 (28.96)	0.75 (19.05)	0.04 (1.02)	0.049"	3500	240
H-ZCOTWG-12A	3/4	3/4"	0.80 (20.32)	0.65 (16.51)	1.20 (30.48)	0.75 (19.05)	0.04 (1.02)	0.049"	2100	150
H-ZCOTWG-16A	1	1"	1.06 (26.92)	0.87 (22.10)	1.41 (35.81)	0.96 (24.38)	0.04 (1.02)	0.065"	2100	150

# Hy-Lok ZCO O-Ring Face Seal Fittings

## Socket weld Reducing Gland



## Blind Gland



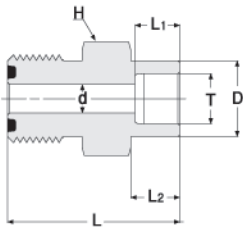
Part Number	ZCO Size in	T Tube O.D.	D	d	L	L <sub>1</sub>	Working Pressure	
			in. (mm)				psig	bar
H-ZCOSWRG4-2	1/4	1/8"	0.29 (7.37)	0.09 (2.29)	0.77 (19.56)	0.10 (2.54)	12600	860
H-ZCOSWRG8-4	1/2	1/4"	0.48 (12.19)	0.18 (4.57)	0.81 (20.57)	0.28 (7.11)	10700	730

Part Number	ZCO Size in	D	L
		in. (mm)	
H-ZCOBG- 4	1/4	0.38 ( 9.65)	0.44 (11.18)
H-ZCOBG- 8	1/2	0.60 (15.24)	0.44 (11.18)
H-ZCOBG- 12	3/4	0.92 (23.37)	0.50 (12.7 )
H-ZCOBG- 16	1	1.19 (30.23)	0.50 (12.7 )

## BODIES

### Socket Weld Connector

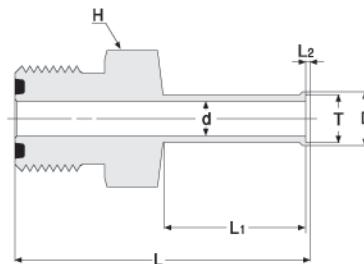
Adapts tubing to ZCO gland.



Part Number	ZCO Size in	T Tube O.D.	D	d	L	L <sub>1</sub>	L <sub>2</sub>	H Hex Flat	Working Pressure	
			in. (mm)						psig	bar
H-ZCOSWC- 2	1/8	1/8"	0.29 (7.37)	0.09 (2.29)	0.88 (22.35)	0.10 (2.54)	0.10 (2.54)	5/8"	12600	860
H-ZCOSWC- 4	1/4	1/4"	0.38 (9.65)	0.18 (4.57)	1.09 (27.69)	0.28 (7.11)	0.31 (7.87)	5/8"	6800	460
H-ZCOSWC- 6	1/2	3/8"	0.60 (15.24)	0.28 (7.11)	1.28 (32.51)	0.31 (7.87)	0.38 (9.65)	15/16"	8100	560
H-ZCOSWC- 8	1/2	1/2"	0.73 (18.50)	0.40 (10.16)	1.34 (34.04)	0.38 (9.65)	0.44 (11.18)	15/16"	3000	200
H-ZCOSWC- 12	3/4	3/4"	0.92 (23.37)	0.62 (15.75)	1.50 (38.10)	0.44 (11.18)	0.50 (12.7 )	1-5/16"	3700	250
H-ZCOSWC- 16	1	1"	1.19 (30.23)	0.87 (22.10)	1.72 (43.69)	0.62 (15.75)	0.69 (17.53)	1-5/8"	3000	200

### Automatic Tube Weld Connector

Adapts tubings to ZCO gland.

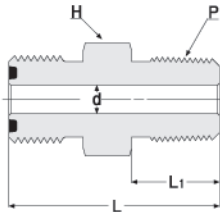


Part Number	ZCO Size in	T Tube O.D.	D	d	L	L <sub>1</sub>	L <sub>2</sub>	H Hex Flat	Nominal Wall Thickness	Working Pressure	
			in. (mm)							psig	bar
H-ZCOTWC- 4A	1/4	1/4"	0.29 ( 7.37)	0.18 ( 4.57)	1.59(40.39)	0.75(19.05)	0.02(0.51)	5/8"	0.035"	5100	350
H-ZCOTWC- 6A	1/2	3/8"	0.41(10.41)	0.31( 7.87)	1.74(44.20)	0.75(19.05)	0.03(0.76)	15/16"	0.035"	3300	220
H-ZCOTWC- 8A	1/2	1/2"	0.55(13.97)	0.40(10.16)	1.75(44.45)	0.75(19.05)	0.04(1.02)	15/16"	0.049"	3500	240
H-ZCOTWC-12A	3/4	3/4"	0.80(20.32)	0.65(16.51)	1.78(45.21)	0.75(19.05)	0.04(1.02)	15/16"	0.049"	2200	150
H-ZCOTWC-16A	1	1"	1.06(26.92)	0.87(22.01)	2.03(51.56)	0.96(24.38)	0.04(1.02)	1-5/8"	0.065"	2200	150

# Hy-Lok ZCO O-Ring Face Seal Fittings

## Male Connector

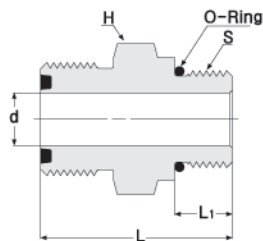
Converts female NPT thread to ZCO gland.



Part Number	ZCO Size in	P Male NPT Size	d	L	L <sub>1</sub>	H Hex Flat	Working Pressure	
			in. (mm)				psig	bar
H-ZCOMC 4- 2N	1/4	1/8"	0.18( 4.57)	1.16(29.46)	0.38( 9.65)	5/8"	10000	680
H-ZCOMC 4- 4N	1/4	1/4"	0.18( 4.57)	1.34(34.04)	0.56(14.22)	5/8"	13400	920
H-ZCOMC 8- 6N	1/2	3/8"	0.38( 9.65)	1.46(37.08)	0.56(14.22)	15/16"	7800	530
H-ZCOMC 8- 8N	1/2	1/2"	0.40(10.16)	1.65(41.91)	0.75(19.05)	15/16"	10000	680
H-ZCOMC12-12N	3/4	3/4"	0.62(15.75)	1.75(44.45)	0.75(19.05)	1-5/16"	7300	500
H-ZCOMC16-16N	1	1"	0.87(22.10)	1.97(50.04)	0.94(23.88)	1-5/8"	5300	360

## SAE/MS Connector

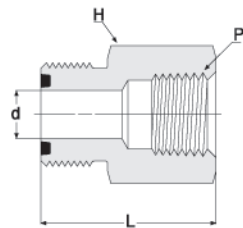
Converts SAE/MS thread boss to ZCO gland.



Part Number	ZCO Size in	S Thread Size	d	L	L <sub>1</sub>	H Hex Flat	O-ring Uniform size Number	Working Pressure	
			in. (mm)					psig	bar
H-ZCOSC 4- 2U	1/4	7/16-20	0.18( 4.57)	1.24(31.50)	0.36( 9.14)	11/16"	-904	4500	310
H-ZCOSC 4- 6U	1/4	9/16-18	0.18( 4.57)	1.17(29.72)	0.39( 9.91)	11/16"	-906	4500	310
H-ZCOSC 8- 4U	1/2	7/16-20	0.18( 4.57)	1.36(34.54)	0.36( 9.14)	15/16"	-904	4500	310
H-ZCOSC 8- 6U	1/2	9/16-18	0.30( 7.60)	1.39(35.31)	0.39( 9.91)	15/16"	-906	4500	310
H-ZCOSC 8- 8U	1/2	3/4-16	0.40(10.16)	1.47(37.34)	0.44(11.18)	1"	-908	4500	310
H-ZCOSC12-12U	3/4	1-1/16-12	0.62(15.75)	1.73(43.94)	0.59(14.99)	1-3/8"	-912	3600	240
H-ZCOSC16-16U	1	1-5/16-12	0.85(21.60)	1.79(45.47)	0.59(14.99)	1-5/8"	-916	2900	190

## Female Connector

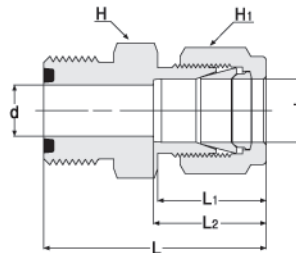
Converts male NPT thread to ZCO gland.



Part Number	ZCO Size in	P Female NPT Size	d	L	H Hex Flat	Working Pressure	
			in. (mm)			psig	bar
H-ZCOFC 4- 2N	1/4	1/8"	0.18( 4.57)	1.25(31.75)	5/8"	8400	570
H-ZCOFC 4- 4N	1/4	1/4"	0.18( 4.57)	1.39(35.31)	3/4"	6600	450
H-ZCOFC 8- 6N	1/2	3/8"	0.40(10.16)	1.57(39.88)	15/16"	6600	450
H-ZCOFC 8- 8N	1/2	1/2"	0.40(10.16)	1.77(44.96)	1-1/16"	4900	330
H-ZCOFC12-12N	3/4	3/4"	0.62(15.75)	1.93(49.02)	1-5/16"	4600	310
H-ZCOFC16-16N	1	1"	0.87(22.10)	2.02(51.31)	1-5/8"	4400	300

## Hy-Lok Tube Fitting Connector

Adapts tubing to ZCO gland.

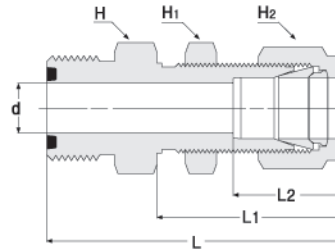


Part Number	ZCO Size in	T Tube O.D.	d	L	L <sub>1</sub>	L <sub>2</sub>	H Hex Flat	H <sub>1</sub> Hex Flat	Working Pressure	
			in. (mm)						psig	bar
H-ZCOCC 4- 2	1/4	1/8"	0.09( 2.29)	1.38(35.05)	0.60(15.24)	0.51(12.95)	5/8"	7/16"	10900	750
H-ZCOCC 4- 4	1/4	1/4"	0.18( 4.57)	1.47(37.34)	0.70(17.78)	0.60(15.24)	5/8"	9/16"	10200	700
H-ZCOCC 8- 6	1/2	3/8"	0.28( 7.11)	1.65(41.91)	0.76(19.30)	0.66(16.76)	15/16"	11/16"	6500	440
H-ZCOCC 8- 8	1/2	1/2"	0.40(10.16)	1.78(45.21)	0.87(22.10)	0.90(22.86)	15/16"	7/8"	6700	460
H-ZCOCC12-12	3/4	3/4"	0.62(15.75)	1.86(47.24)	0.87(22.10)	0.96(22.38)	1-5/16"	1-1/8"	5800	390
H-ZCOCC16-16	1	1"	0.87(22.10)	2.06(52.32)	1.04(26.42)	1.23(31.24)	1-5/8"	1-1/2"	4700	320

# Hy-Lok ZCO O-Ring Face Seal Fittings

## Hy-Lok Tube Fitting Bulkhead Connector

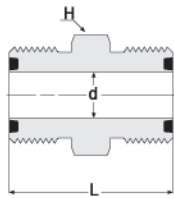
Adapts tubing to ZCO gland.



Part Number	ZCO Size in	T Tube O.D.	d	L	L <sub>1</sub>	L <sub>2</sub>	H Hex Flat	H <sub>1</sub> Hex Flat	H <sub>2</sub> Hex Flat	Panel Hole Size	Max. Panel Thickness	Working Pressure	
			in. (mm)						psig			bar	
H-ZCOCBHC 4- 4	1/4	1/4"	0.18 ( 4.57)	2.10(53.34)	1.32(33.53)	0.60(15.24)	5/8"	5/8"	9/16"	29/64"	0.40"	10200	700
H-ZCOCBHC 6- 6	1/2	3/8"	0.28 ( 7.11)	2.34(59.44)	1.45(36.83)	0.66(16.76)	15/16"	3/4"	11/16"	37/64"	0.44"	6500	440
H-ZCOCBHC 8- 8	1/2	1/2"	0.40(10.16)	2.55(64.77)	1.65(41.91)	0.90(22.86)	15/16"	15/16"	7/8"	49/64"	0.50"	6700	460
H-ZCOCBHC12-12	3/4	3/4"	0.62(15.75)	2.86(72.50)	1.87(47.50)	0.96(24.38)	1-5/16"	1-3/16"	1-1/8"	1-1/64"	0.66"	5800	390
H-ZCOCBHC16-16	1	1"	0.87(22.10)	3.29(83.57)	2.26(57.40)	1.23(31.24)	1-5/8"	1-5/8"	1-1/2"	1-21/64"	0.75"	4700	320

## Union

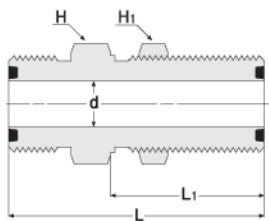
Connects ZCO glands.



Part Number	ZCO Size in	d	L	H Hex Flat	Working Pressure	
		in. (mm)			psig	bar
H-ZCOUA-4	1/4	0.18 ( 4.57)	1.25 (31.75)	5/8"	14300	980
H-ZCOUA-8	1/2	0.40 (10.16)	1.50 (38.10)	15/16"	11100	760

## Bulkhead Union

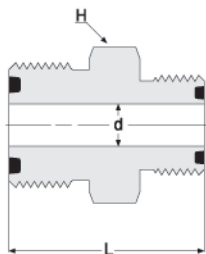
Connects ZCO glands.



Part Number	ZCO Size in	D	d	L	H Hex Flat	H <sub>1</sub> Hex Flat	Panel Hole Size	Max. Panel Thickness	Working Pressure	
		in. (mm)			psig				bar	
H-ZCOBHU-4	1/4	1.06 (26.92)	0.18 (4.57)	1.88 (47.75)	3/4"	3/4"	37/64"	0.36"	14300	980
H-ZCOBHU-8	1/2	1.19 (30.23)	0.40 (10.16)	2.09 (53.09)	1-1/16"	1-1/16"	57/64"	0.40"	11100	760

## Reducing Union

Connects ZCO glands.

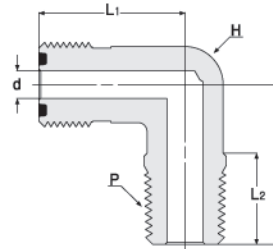


Part Number	ZCO Size in	ZCO Size in	d	L	H Hex Flat	Working Pressure	
			in. (mm)			psig	bar
H-ZCOUR8-4	1/2	1/4	0.18(4.57)	1.43(36.32)	15/16"	11100	760

# Hy-Lok ZCO O-Ring Face Seal Fittings

## Male Elbow

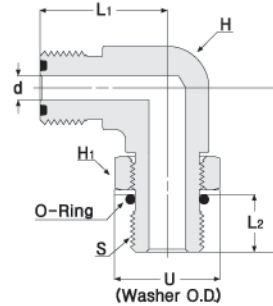
Converts female NPT thread to ZCO gland.



Part Number	ZCO Size in	P Male NPT Size	d	L	L <sub>1</sub>	L <sub>2</sub>	H Wrench Flat	Working Pressure	
								psig	bar
H-ZCOLM 4- 2N	1/4	1/8"	0.18( 4.57)	0.87(22.10)	0.96(24.38)	0.38( 9.65)	1/2"	10000	680
H-ZCOLM 4- 4N	1/4	1/4"	0.18( 4.57)	1.05(26.67)	0.96(24.38)	0.56(14.22)	1/2"	8000	550
H-ZCOLM 8- 6N	1/2	3/8"	0.38( 9.65)	1.26(32.00)	1.26(32.00)	0.56(14.22)	13/16"	7800	530
H-ZCOLM 8- 8N	1/2	1/2"	0.40(10.16)	1.45(36.83)	1.26(32.00)	0.75(19.05)	13/16"	7700	530
H-ZCOLM12-12N	3/4	3/4"	0.62(15.75)	1.67(42.42)	1.48(37.59)	0.75(19.05)	1-1/4"	7300	500
H-ZCOLM16-16N	1	1"	0.87(22.10)	1.94(49.28)	1.56(39.62)	0.94(23.88)	1-11/16"	5300	360

## SAE/ME Adjustable Elbow

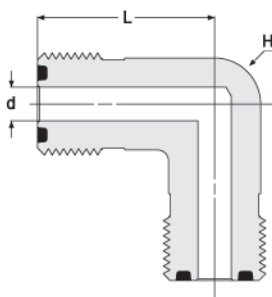
Converts SAE/ME straight thread boss to ZCO gland.



Part Number	ZCO Size in	S Straight Thread Size	d	L	L <sub>1</sub>	L <sub>2</sub>	H Wrench Flat	H <sub>1</sub> Hex Flat	O-ring Uniform size Number	U	Working Pressure	
											psig	bar
H-ZCOSL 4- 4U	1/4	7/16-20	0.18 (4.57)	1.19 (30.23)	0.96 (24.38)	0.39 (9.91)	5/8"	9/16"	-904	0.65"	4500	310
H-ZCOSL 8- 6U	1/2	9/16-18	0.30 (7.62)	1.54 (39.12)	1.33 (33.78)	0.44 (11.18)	1-1/16"	11/16"	-906	0.79"	3600	240
H-ZCOSL 8- 8U	1/2	3/4-16	0.40 (10.16)	1.65 (41.91)	1.33 (33.78)	0.50 (12.7)	1-1/16"	7/8"	-908	1.01"	3600	240
H-ZCOSL12-12U	3/4	1-1/16-12	0.62 (15.75)	2.13 (54.10)	1.53 (38.86)	0.66 (16.76)	1-3/8"	1-1/4"	-912	1.44"	2900	190
H-ZCOSL16-16U	1	1-5/16-12	0.87 (22.10)	2.31 (58.67)	1.72 (43.69)	0.66 (16.76)	1-11/16"	1-1/2"	-916	1.73"	2300	150

## Elbow

Connects ZCO glands.

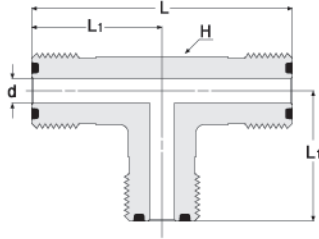


Part Number	ZCO Size in	d	L	H Wrench Flat	Working Pressure	
					psig	bar
H-ZCOLA- 4	1/4	0.18( 4.57)	0.96(24.38)	1/2"	14300	980
H-ZCOLA- 8	1/2	0.40(10.16)	1.26(32.00)	13/16"	11100	760
H-ZCOLA-12	3/4	0.62(15.75)	1.48(37.59)	1-1/4"	10900	750
H-ZCOLA-16	1	0.87(22.10)	1.56(39.62)	1-11/16"	8800	600

# Hy-Lok ZCO O-Ring Face Seal Fittings

## Tee

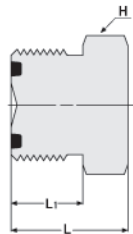
Connects ZCO glands.



Part Number	ZCO Size in	d	L	L <sub>1</sub>	H Wrench Flat	Working Pressure	
		in. (mm)				psig	bar
H-ZCOTA - 4	1/4	0.18 (4.57)	1.92 (48.79)	0.96 (24.38)	1/2"	14300	980
H-ZCOTA - 8	1/2	0.40 (10.16)	2.52 (64.00)	1.26 (32.00)	13/16"	11100	760
H-ZCOTA - 12	3/4	0.62 (15.75)	2.96 (75.18)	1.48 (37.59)	1-1/4"	10900	750
H-ZCOTA - 16	1	0.87 (22.10)	3.12 (79.25)	1.56 (39.62)	1-11/16"	8800	600

## Plugs

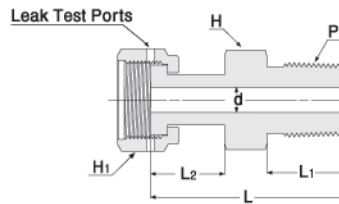
Seals a ZCO gland and female nut.



Part Number	ZCO Size in	L	L <sub>1</sub>	H Hex Flat
		in. (mm)		
H-ZCOP - 4	1/4	0.77(19.56)	0.47(11.94)	5/8"
H-ZCOP - 8	1/2	0.89(22.61)	0.56(14.22)	15/16"
H-ZCOP - 12	3/4	0.99(25.15)	0.56(14.22)	1-5/16"
H-ZCOP - 16	1	1.02(25.91)	0.56(14.22)	1-5/8"

## Swivel Male Connector

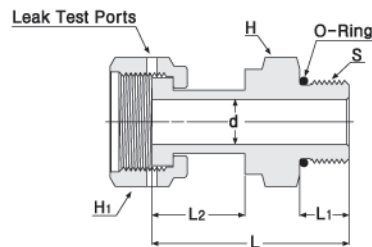
Converts female NPT thread to ZCO O-ring face seal.



Part Number	ZCO Size in	P Male NPT	d	L	L <sub>1</sub>	L <sub>2</sub>	H Hex Flat	H <sub>1</sub> Hex Flat	Working Pressure	
			in. (mm)						psig	bar
H-ZCOSMC 4- 4N	1/4	1/4"	0.18( 4.57)	1.59(40.39)	0.56(14.22)	0.72(18.29)	9/16"	11/16"	9800	670
H-ZCOSMC 8- 6N	1/2	3/8"	0.40(10.16)	1.67(42.42)	0.56(14.22)	0.78(19.81)	11/16"	1"	5600	380
H-ZCOSMC 8- 8N	1/2	1/2"	0.40(10.16)	1.87(47.50)	0.75(19.05)	0.79(20.07)	7/8"	1"	5600	380
H-ZCOSMC12-12N	3/4	3/4"	0.62(15.75)	2.03(51.56)	0.75(19.05)	0.94(23.88)	1-1/16"	1-1/2"	3900	260
H-ZCOSMC16-16N	1	1"	0.87(22.10)	2.36(59.94)	0.94(23.88)	0.98(24.89)	1-3/8"	1-3/4"	2900	190

## Swivel SAE/MS Connector

Converts SAE/MS straight thread boss to ZCO O-ring face seal.

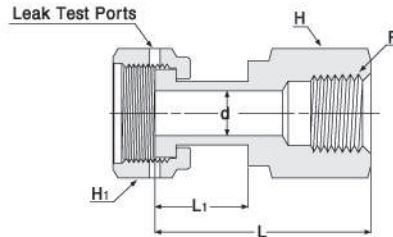


Part Number	ZCO Size in	S Straight Thread Size	d	L	L <sub>1</sub>	L <sub>2</sub>	H Hex Flat	H <sub>1</sub> Hex Flat	O-ring Uniform size Number	Working Pressure	
			in. (mm)							psig	bar
H-ZCOSSC 4- 4U	1/4	7/16-20	0.18( 4.57)	1.54(39.12)	0.36( 9.14)	0.77(19.56)	9/16"	11/16"	-904	4500	310
H-ZCOSSC 8- 6U	1/2	9/16-18	0.40(10.16)	1.64(41.66)	0.39( 9.91)	0.81(20.57)	11/16"	1"	-906	4500	310
H-ZCOSSC 8- 8U	1/2	3/4-16	0.40(10.16)	1.71(43.43)	0.44(11.18)	0.81(20.57)	7/8"	1"	-908	4500	310
H-ZCOSSC12-12U	3/4	1-1/16-12	0.62(15.75)	2.07(52.58)	0.59(14.99)	0.94(23.88)	1-1/4"	1-1/2"	-912	3600	240
H-ZCOSSC16-16U	1	1-5/16-12	0.87(22.10)	2.17(55.12)	0.59(14.99)	0.98(24.89)	1-1/2"	1-3/4"	-916	2900	190

# Hy-Lok ZCO O-Ring Face Seal Fittings

## Swivel Female Connector

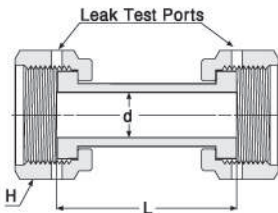
Converts male NPT thread to ZCO O-ring face seal.



Part Number	ZCO Size in	P Female NPT Size	d	L	L <sub>1</sub>	H Hex Flat	H <sub>1</sub> Hex Flat	Working Pressure	
								in. (mm)	
H-ZCOSFC 4- 4N	1/4	1/4"	0.18( 4.57)	1.57(39.88)	0.72(18.29)	3/4"	11/16"	6600	450
H-ZCOSFC 8- 6N	1/2	3/8"	0.40(10.16)	1.73(43.94)	0.84(21.34)	7/8"	1"	5300	360
H-ZCOSFC 8- 6N	1/2	1/2"	0.40(10.16)	1.96(49.78)	0.82(20.83)	1-1/16"	1"	4900	330
H-ZCOSFC12-12N	3/4	3/4"	0.62(15.75)	2.12(53.85)	0.94(23.88)	1-5/16"	1-1/2"	4000	270
H-ZCOSFC16-16N	1	1"	0.87(22.10)	2.29(58.17)	0.98(24.89)	1-5/8"	1-3/4"	3000	200

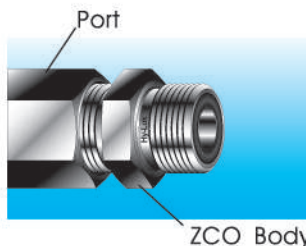
## Swivel Union

Connects ZCO O-ring face seal.

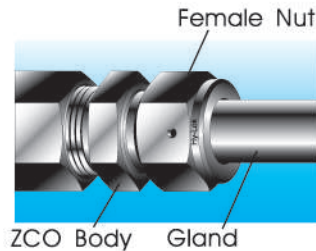


Part Number	ZCO Size in	d	L	H Wrench Flat	Working Pressure	
					in. (mm)	
H-ZCOSUA - 4	1/4	0.18( 4.57)	1.42(36.07)	11/16"	10200	700
H-ZCOSUA - 8	1/2	0.40(10.16)	1.61(40.90)	1"	5800	390

## Installation Instructions



Install ZCO body to existing port, tubing or equipment.



Assemble ZCO body with ZCO female nut and gland. And Tighten nut 1/8 turn with a wrench after finger tight to make sure metal to metal contact.

**NOTE :** When ZCO body or gland needs soldering, welding or brazing procedures, the O-ring should be removed to prevent possible damage

## Ordering Information

Use **S316** for bodies and gland, nuts, **316L** for automatic tube weld fittings as a suffix to the basic part no. eg, H-ZCOSWG-8-S316, H-ZCOTWG-4-316L.

### O-ring material selection

In case standard, No designator used.

Special O-Ring materials available on customer requests by indicating O-ring designator referred to Page 1. eg, H-ZCOTA-8-S316 (for standard O-ring), H-ZCOTA-8-BU-S316 (for Buna-N O-ring)

## TYPE APPROVALS



American Bureau Shipping  
CERTIFICATE NO.00-BK50288-X



Lloyd's Register  
CERTIFICATE NO.01/10075



GERMANISCHER LLOYD  
CERTIFICATE NO.57798 - 91 HH



DET NORSKE VERITAS  
CERTIFICATE NO.P - 9100



Distributed by :

www.hy-lok.com